

EVIPOWER SERIES

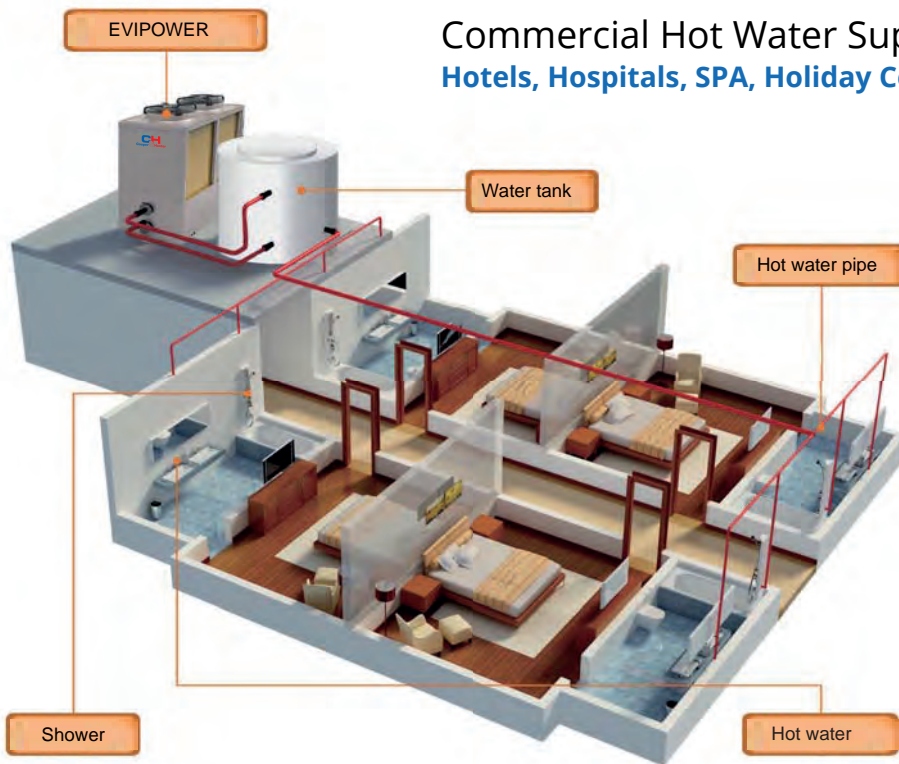
HEAT PUMP FOR HEATING, COOLING & HOT WATER SUPPLY



Ambient Temp.
Range -30 °C to 45 °C



Wide Applications



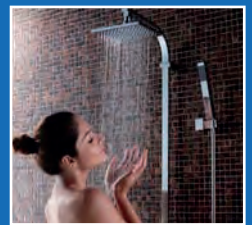
Commercial Hot Water Supply:
Hotels, Hospitals, SPA, Holiday Center



Hotel



SPA

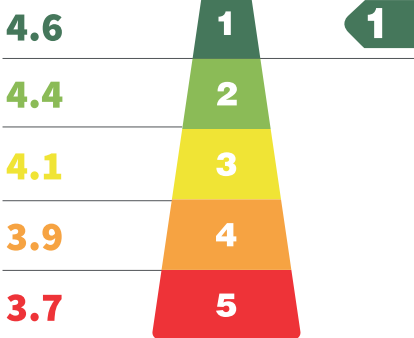


Shower

EVIPOWER

Dedicated Heat Pump Technology

COP ENERGY LABEL

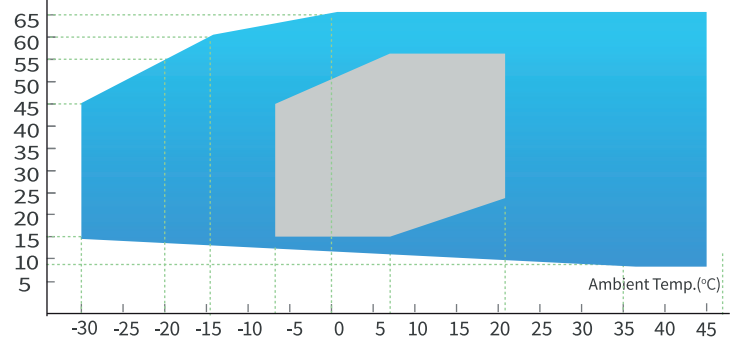


GB29541-2013

High COP

Adopting R410A refrigerant and circulating heating method, Heat Pump is able to keep its COP as high as 4.67.

Outlet Water Temp.(°C)



■ EVIPOWER

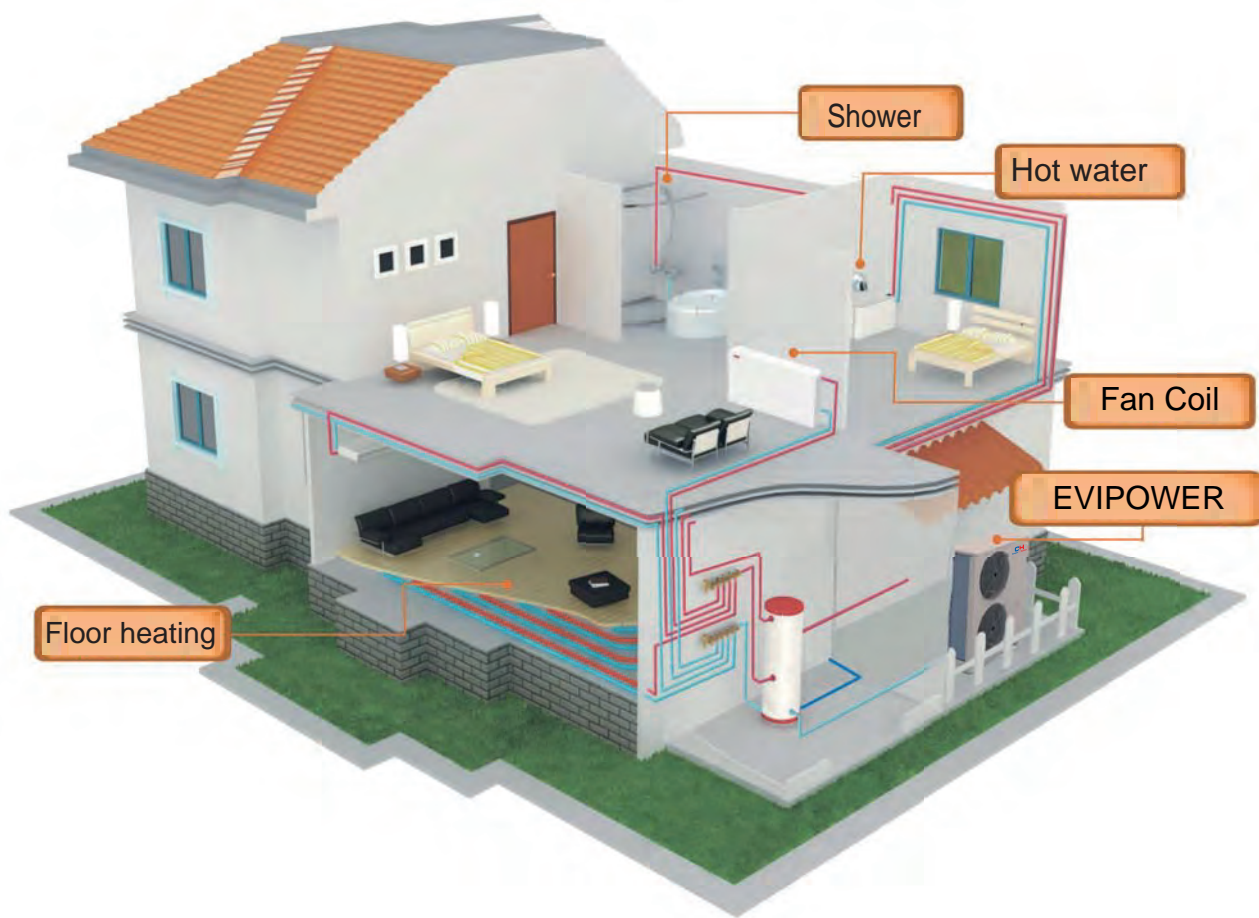
■ Standard Heat Pumps

Water Temp. up to 65°C

Thanks to EVI technology, EVIPOWER Series features a wide operating temp. range. It means they can reach high water temp.(55-65°C) even in cold climate ranging from -20°C to 45°C, and can work safely and reliably at ambient temp. as low as -30°C with Wet Injection technology.

Residential Hot Water/Heating:

Houses, Apartments, Villas.



COPELAND R410A EVI

- Axial and radial compliance for high reliability
- EVI technology :
25% further heating capacity
10% higher heating COP
- Tandem combination for superior seasonal efficiency



SUPERHEAT MANAGEMENT

- TEV increases heating capacity and extend the operation life
- EEV increases COP and limit the discharge temp. under safe level
- Less deforsting time and more energy-saving;



RELIABLE HEAT EXCHANGER

- No freezing off even powered off for 20hs at -30°C
- patented heat exchanger for R410A
- Overall insulation with low heat loss
- Monobloc design; Save space

Parameters

EVIPOWER



		CH-HP16UMNM	CH-HP31UMNM	CH-HP42UMNM	CH-HP84UMNM
Hot Water Condition A20/15°C, W15°C to 55°C	Heating Capacity(kW)	19.0	36.5	50	100.0
	Power Input(kW)	4.1	7.8	10.8	22.0
	COP(W/W)	4.63	4.67	4.63	4.55
	Hot Water(L/h)	400	800	1075	2150
*Heating Condition A7/6°C, W50°C/ 55°C	Heating Capacity(kW)	15.9	31.4	43.0	86.0
	Power Input(kW)	5.3	10.6	14.5	29.0
	COP(W/W)	2.96	2.96	2.97	2.97
**Heating Condition A7/6°C, W30°C/ 35°C	Heating Capacity(kW)	15.7	31.1	42.0	84.0
	Power Input(kW)	3.47	7.4	10.0	20.0
	COP(W/W)	4.53	4.20	4.20	4.20
Max. Power Input	kW	6.0	12.0	20.8	41.5
Max. Current	A	8.8	19.0	37.0	74.0
Power Supply	V/Ph/Hz	380~415V/3N/50Hz			
Compressor Type	/	Copeland R410A EVI Scroll			
Compressor Quantity	/	1	2	1	2
Fan Quantity	/	2	2	1	2
Fan Motor Input	W	140 x 2	300 x 2	1100 x 1	1100 x 2
Water Flow Volume	m3/h	2.6	5.2	8.5	17
Water Pressure Drop	kPa	60.0	53.0	60.0	65.0
Suggested Water Temp. Differential	°C	5°C	5°C	5°C	5°C
Water Connection	inch	1	1.5	2	DN80 Flange
Noise	dB(A)	60	65	71	73
Air Discharge Type	/	Horizontal		Vertical	
Refrigerant Type	/	R410A			
Operation Range	°C	-30°C~45°C			
Condenser	/	Tube in Shell Heat Exchanger			
Suggested Outlet Water Temp.	°C	60			
Max. Outlet Water Temp.	°C	65			
Net Dimension(L/W/H)	mm	980×390×1280	1556×605×1850	1413×854×2000	2180×1080×2100
Shipment Dimension(L/W/H)	mm	1050×430×1400	1630×700×2010	1490×900×2160	2260×1130×2260
Net Weight	kg	143	331	475	778
Gross Weight	kg	159	366	500	843